

PETER PAUL

SERIES 70 HIGH FLOW MODEL 72



TWO-WAY NORMALLY CLOSED VALVES
LOW PRESSURE & VACUUM APPLICATIONS

NOW! MORE CAPABILITIES AND CAPACITIES FROM THE 70 SUPER VALVE SERIES.

THIS "72" PROVIDES **HIGH FLOW** at low pressures

- Vacuum lines • Low pressure gas and low pressure liquids
- Gravity feed lubrication • Quick media fill or dump

SPECIFICATIONS

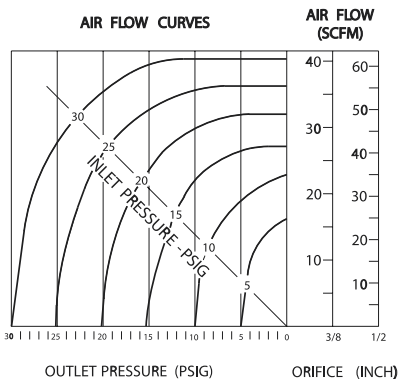
	72T10DCM	72B11DCM
Catalog Number	72T10DCM	72B11DCM
Valve Type	2WNC	2WNC
Orifice Diameter	3/8"	1/2"
Flow Rate	see curves	see curves
CV Factor	1.92	2.92
Pipe Size	3/8 NPT	1/2 NPT
Internal Leakage	bubble tight	bubble tight
External Leakage	bubble tight	bubble tight
Maximum Operating Pressure Differential	25 PSI	15 PSI
Vacuum	down to 5 microns	down to 5 microns
Repair Packs	K72TDD (A.C. or D.C.)	K72BDD (A.C. or D.C.)

72T10DCM & 72B11DCM

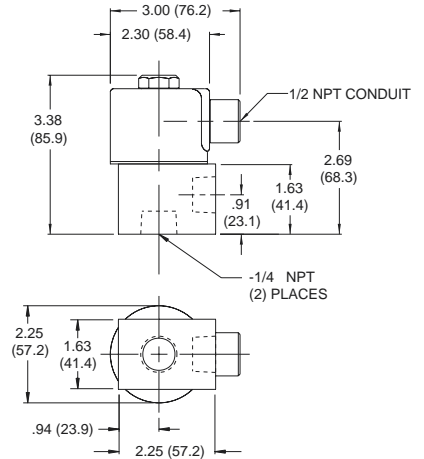
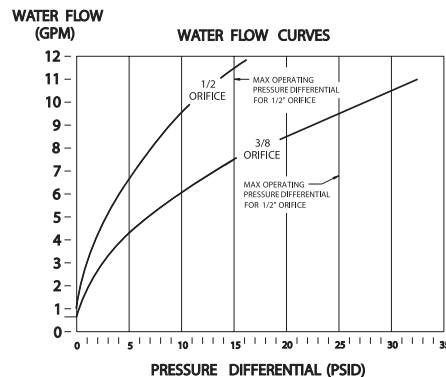
- Voltage** most A.C. & D.C. voltages
- Wattage** 18 watts A.C., 16 watts D.C.
- Response Time**
 - (On Air) 6 to 12 milliseconds to open; 12 to 28 milliseconds to close
- Operating Speed** up to 350 cycles per minute
- Heat Rise** 80°C (176°F) max. in 25°C ambient for continuous duty
- Valve Temperature Range:** STANDARD VALVES – 0°F (-18°C) to 104°F (40°C) ambient; 0°F (-18°C) to 150°F (65°C) media. OPTIONAL VALVES – can tolerate much higher or much lower ambient and media temperatures. Consult factory for specifics.
- Proof Pressure** 5 times maximum operating pressure differential
- Burst Pressure** 500 psi
- Media** air, inert gases and oil
- Filtration** helpful but not required
- Lubrications** helpful but not required
- Ambient Temperature**
 - Range 18°C (0°F) to 40°C (104°F)
- Life Expectancy** millions of cycles on most applications
- Vibrations & Shock** 3 G's and above
- Elastomers** FKM (standard)
- *Body** Aluminum anodized, corrosion resistant (All other parts stainless steel)

*Different materials for special applications can be made available.
i.e. STAINLESS STEEL body for hostile conditions. Consult factory.

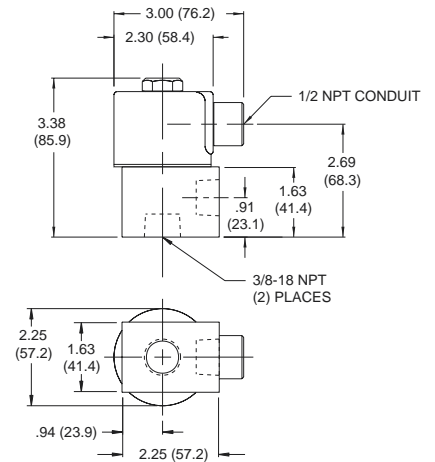
AIR FLOW CURVES



WATER FLOW CURVES



SERIES 70 1/2" ORIFICE 2-WAY N.C. VALVE



SERIES 70 3/8" ORIFICE 2-WAY N.C. VALVE