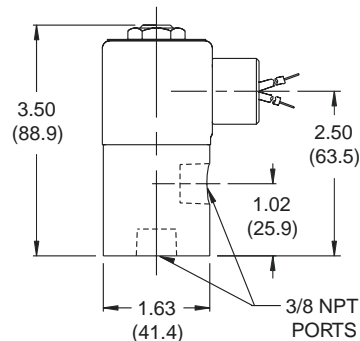
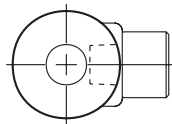
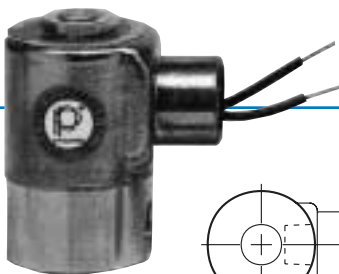


**PETER PAUL**

# SERIES 20 High Flow Low Pressure Model 22T



## SPECIFICATIONS - OPERATING CONDITIONS

**Media:** Air and other fluids, compatible with standard Buna seals. Hot water, steam, gasoline, and many oils require special seal materials - Consult factory.

**Valve Temperature Range:** STANDARD VALVES – 0°F (-18°C) to 104°F (40°C) ambient; 0°F (-18°C) to 150°F (65°C) media. OPTIONAL VALVES – can tolerate much higher or much lower ambient and media temperatures. Consult factory for specifics.

**Burst Pressure:** Series 20 - 5000 PSI

**Leakage:** Bubble tight for standard valves

**Vacuum:** To 15° Mercury

## ELECTRICAL CHARACTERISTICS

**Coil Voltage:** 5 to 825 VAC 50-60 HZ.

**Nominal Power:** 7.7 Watts AC

**Coil Construction:** Molded and Non-Molded.

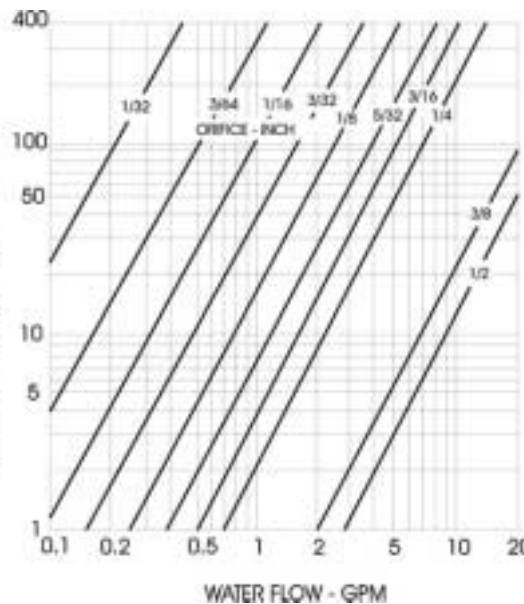
**Typical Response Time on Air:** 4-16 Milliseconds

## MECHANICAL CHARACTERISTICS

**Body:** Stainless steel

**Porting:** 3/8" NPT

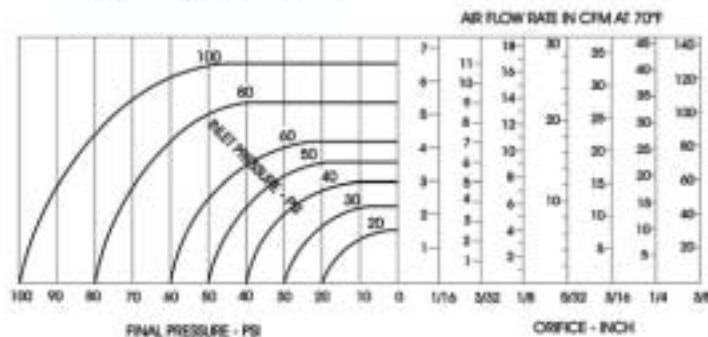
**Housing:** Grommet & 1/2 NPT conduit - many options available



MAX. PRESS DROP P.S.I.		ORIFICE SIZE		CV FACTOR	VALVE NUMBER	
AC	ORIFICE SIZE	CV FACTOR	GROMMET HOUSING 3/8 NPT PIPE PORTS	CONDUIT HOUSING 3/8 NPT PIPE PORTS		
0 - 10	3/8	2.0	22T1DGV	_____	22T1DCV	_____
or up to 15° vacuum						

WHEN ORDERING ADD VOLTAGE AND FREQUENCY TO COMPLETE VALVE NUMBER.

EXAMPLE: (22TDGV-120/60)



## OPTIONS AVAILABLE:

**HOUSING OPTIONS** \*see page 78  
STRAIN RELIEF CONNECTOR

SINGLE AUTOMOTIVE

DOUBLE AUTOMOTIVE

“AN” CONNECTOR

MOUNTING BRACKET

**COIL OPTIONS** \*see page 79

MOLDED COIL

POTTED COIL & HOUSING

HIGH TEMPERATURE MOLDED COIL

**MISCELLANEOUS OPTIONS** see page 76

SILVER SHADING RING

ALUMINUM SHADING RING

**Note:** Availability of certain options or combination of options may vary with quantity of units ordered - Consult representative or factory