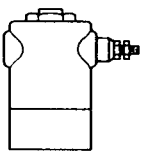
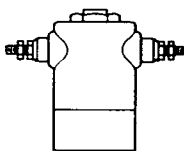


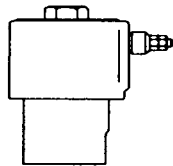
HOUSING OPTIONS Constructed of stainless steel, plated and painted steel. Styles include strain relief connector, single automotive, double automotive, AN connector, splice box, yoke, conduit, grommet, bracket, JIC housing, potted coil & housing.



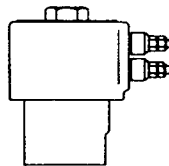
SERIES 20 & 30
OPTION AS
AUTOMOTIVE TERMINAL
SINGLE



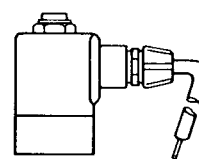
SERIES 20 & 30
OPTION AD
AUTOMOTIVE TERMINAL
DOUBLE



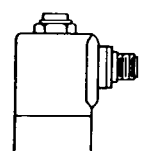
SERIES 70
OPTION AS
AUTOMOTIVE TERMINAL
SINGLE



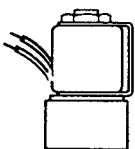
SERIES 70
OPTION AD
AUTOMOTIVE TERMINAL
DOUBLE



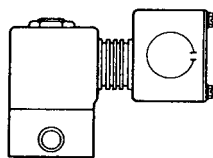
OPTION Q
STRAIN RELIEF CONNECTOR
SUPPLIED WITH SJT LEADS



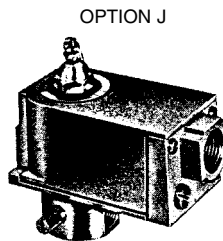
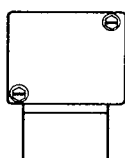
OPTION S
"AN" CONNECTOR



OPTION Y
MAGNETIC YOKE



OPTION N
SPLICE BOX

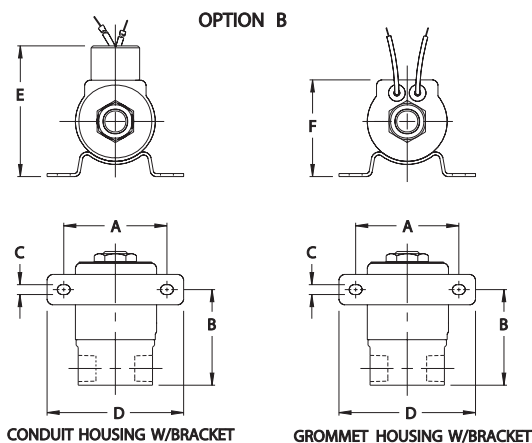


OPTION J

J.I.C. HOUSING (SERIES 20 ONLY)

When additional solenoid protection is required, Peter Paul's J.I.C. Enclosure may be applied. In addition to meeting J.I.C. Standards, this unit fulfills requirements for many NEMA Types. See listings in column at left. Maintenance is simplified, because removal of electrical conduit is unnecessary upon unit disassembly. Available with pigtail wire in Peter Paul Solenoid valves or in Peter Paul valve operators for OEM application.

BRACKET DIMENSIONS FOR ALL SERIES

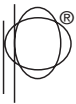


INCHES

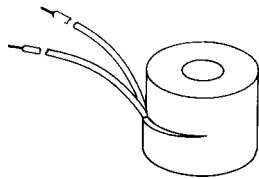
SER.	A	B	C	D	E	F
20	2.13	1.97	.20	2.81	2.67	1.98
30	2.13	1.53	.20	2.81	2.67	1.98
50	1.50	1.53	.19	1.94	1.88	1.34
70	2.75	2.44	.20	3.44	3.31	2.61

MILLIMETERS

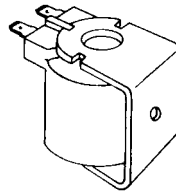
SER.	A	B	C	D	E	F
20	54	50	5.2	71.3	67.9	50.4
30	54	38.9	5.2	71.3	67.9	50.4
50	38.1	38.9	4.8	49.2	47.6	34.1
70	69.8	61.9	5.2	87.3	84.1	66.3



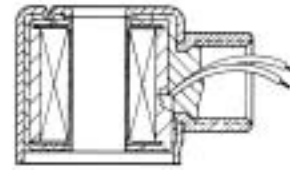
COIL OPTIONS Besides coils ranging from 1.5—1150 volts AC & DC, the construction varieties are: non-molded, molded, high temperature, potted coil & housing, diode rectified coil, third wire ground, and spade terminal coil.



OPTION M — waterproof molded coil—class F (155°C) rating. Coil completely molded in epoxy for maximum moisture resistance.



* **OPTION KM** — molded spade terminal coil and yoke—epoxy molded coil with two ¼ spade terminals for quick assembly and disconnect.

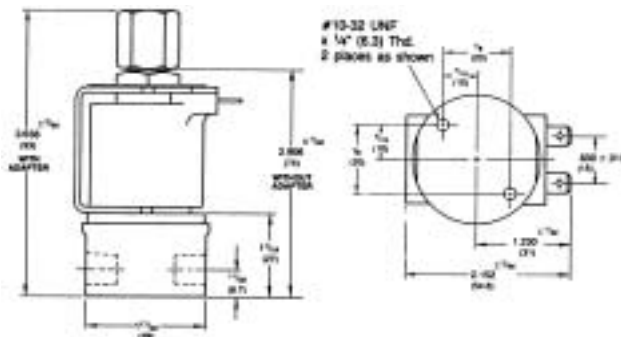


OPTION P — coil epoxy potted into housing—offers max. moisture and vibration resistance. Meets UL raintight & rainproof housing requirements and NEMA—4 Classifications.

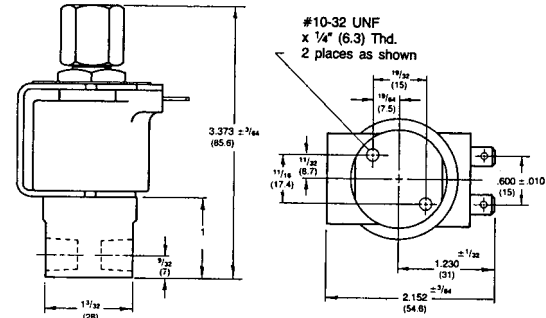
* NOTE: Height of valve increases with Spade Terminal option—see drawings below

VALVE BODY DIMENSIONS-SPADE TERMINAL COILS

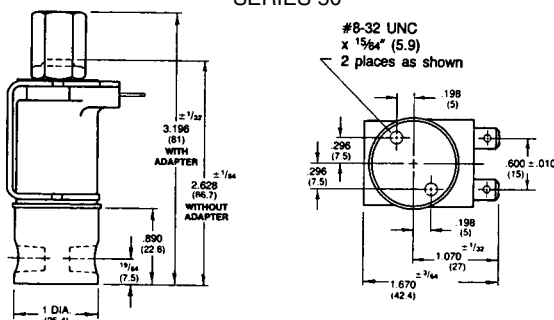
SERIES 20



SERIES 30 3-WAY VALVE



SERIES 50



SERIES 30 2-WAY VALVE

