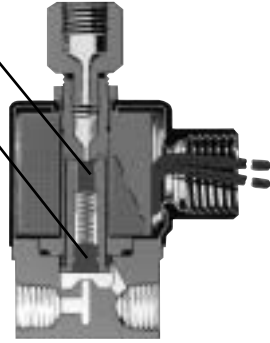


MISCELLANEOUS OPTIONS

SEAL MATERIAL

Peter Paul Electronics offers a large selection of optional seal materials. Standard seal material for catalog valves is nitrile elastomer, a good general purpose compound, satisfactory for most applications. Insert materials such as FKM, Nordel, KeL-F®, and Teflon® are available for applications where excessive heat is a factor, or for use with any media that can cause insert swelling or deterioration. Consult factory for proper usage.

COLOR CODED SEAL INSERTS

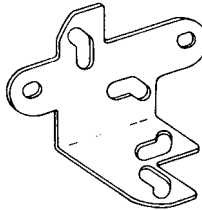


Trade Name	Color Code
Hypalon®	Green
Kalrez®	Black
Neoprene®	Red
Neoprene®	Black
Nylon®	Opaque
Teflon®	White
Urethane®	Yellow
FKM	Brown
Santoprene®	Off-White
KEL-F®	Opaque
Nitrile (Buna N)	Blue
Nordel	Gray
Silicone	Red

UNIVERSAL MOUNTING BRACKET

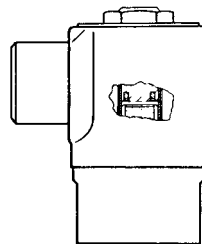
“The Flat Mounting bracket”

Series 20, 30, & 50 valves can be secured to bracket using tapped hole in bottom of valve body. Order Part No. 20-2416.



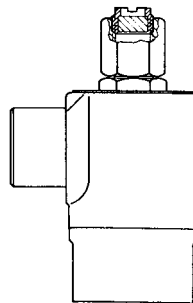
OPTION A — ALUMINUM SHADING RING

Used on valves where media is harmful to standard copper ring, but will not attack aluminum rings.



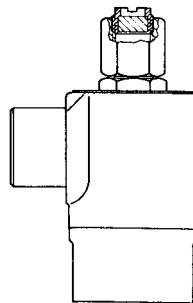
OPTION S — SILVER SHADING RING

Used on valves where media is harmful to standard copper ring, but will not attack silver rings.

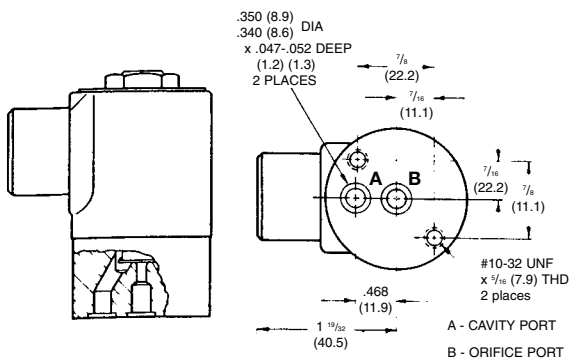


OPTION V — BUILT IN MUFFLER

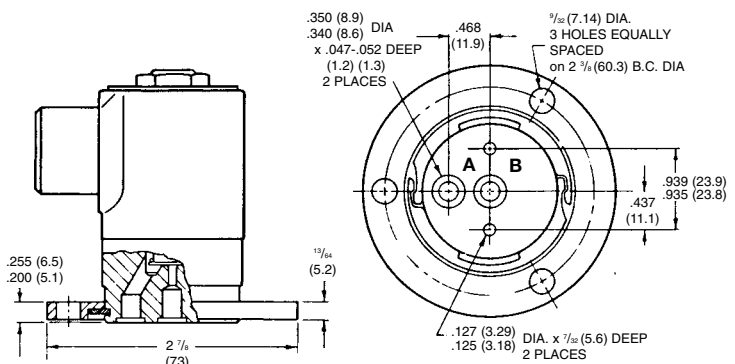
Compact muffler located in valve outlet port to silence excessive noise. Muffler location will vary according to valve type — 3 WNC Valve Muffler in sleeve exhaust port, 2 WNC Valve Muffler in body outlet port, etc.



MANIFOLD MOUNTING Option “E”



FLANGE MOUNTING Option “H”



FILTERS & MUFFLERS

INLINE FILTERS FEATURE:

- RUGGED ALL-BRASS CONSTRUCTION
- 1/8 & 1/4 NPT SIZES
- AVAILABLE IN 20, 40, 60 & 100 MICRON RATINGS

FILTER/STRAINERS FEATURE:

- RUGGED ALL-BRASS CONSTRUCTION
- 1/8 NPT CONNECTIONS
- 43 MICRON STAINLESS STEEL SCREEN
- EASY SERVICE WITHOUT DISTURBING FLUID CONNECTIONS

EXHAUST MUFFLERS FEATURE:

- RUGGED ALL-STAINLESS CONSTRUCTION
- SINTERED STAINLESS MUFFLER ELEMENT
- COMPACT DESIGN — LOW PROFILE
- 1/8 & 1/4 NPT SIZES
- LOW NOISE LEVEL
i.e., Exhaust noise of 3WNC Valve at 100 psi and 200 CPM reduced from 99dBA to 75dBA (measured at 3 feet from Muffler)
- CAN BE USED AS BREATHER VENT FILTER



All Peter Paul filters and mufflers are designed for maximum flow with minimum restriction and are compatible with all common media not reacting with brass or stainless steel.

PRODUCT NUMBER CHART				
DESCRIPTION	PART NUMBER	PIPE SIZE	MICRON SIZE	MATERIAL
INLINE FILTER	F520-A	1/8 NPT	20	BRASS
	F540-A		40	
	F560-A		60	
	F5100-A		100	
	F620-A	1/4 NPT	20	
	F640-A		40	
	F660-A		60	
F6100-A	100			
FILTER/STRAINER	S543-A	1/8 NPT	43	BRASS
	S5140-A	1/8 NPT	140	
MUFFLER	M875-C	1/8 NPT	75	430F SS
	M975-C	1/4 NPT	75	430F SS

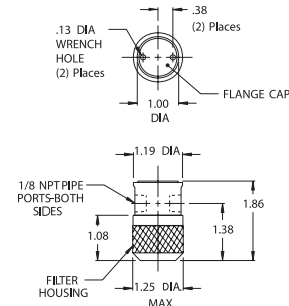
EXAMPLE: Inline Filter 1/4 NPT 60 Micron Brass Body No.F660-A

FILTER/STRAINER

The Peter Paul Filter Strainers are designed for the customer who needs efficient filtration of large contaminating particles along with ease of servicing. The 43 Micron screen has a large filter area and can be cleaned without removing the filter body from the system.

SPECIFICATIONS:

Pipe Size: 1/8 NPT $C_v = .23$
Screen Rating: 43 Micron or 140 Micron
Max. Working Press. Diff.: 300 PSI
Burst Press.: 4000 PSI
Temp.: -40° to +200°F
Materials: Brass Body & Filter Hsg., Stainless Strainer & Flange Cap
Buna N Seals
Media: All non-corrosive liquids & gases

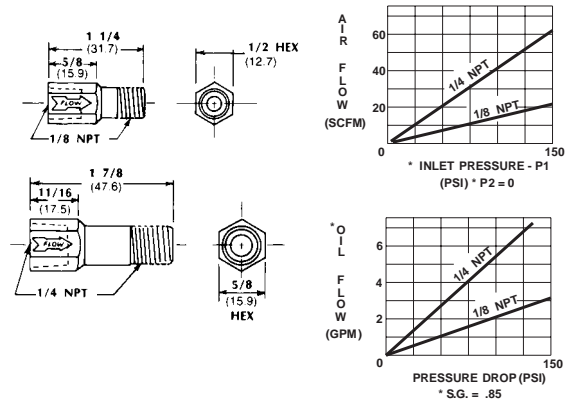


INLINE FILTER

The Peter Paul Inline Filters are designed to be a convenient "last chance" filter which provides maximum protection for all fluid power devices. Female/Male pipe threads are provided for ease of installation. Available in four micron ratings.

SPECIFICATIONS:

Pipe Size: 1/8 or 1/4 NPT
Micron Rating: 20, 40, 60, or 100
Max. Working Press. Diff.: 300 PSI
Element Burst Press. Diff.: 1500 PSI
Temp.: -40° to +300°F
Materials: Brass Body with sintered Bronze Filter Element
Media: All non-corrosive liquids & gases



EXHAUST MUFFLER

The Peter Paul Exhaust Muffler is designed for use with air cylinders and control valves or wherever excessive noise due to exhausting air is a problem. These mufflers will fit into any 1/8 or 1/4 pipe port and will reduce exhaust noise substantially, yet will not cause excessive restriction.

SPECIFICATIONS:

Pipe Size: 1/8 or 1/4 NPT
Max. Working Press. Diff.: 400 PSI
Element Burst Press. Diff.: 4000 PSI
Temp.: -40° to +300°F
Materials: Stainless Steel Body with Sintered Stainless Element (75 Micron)
Media: Air and most gases

