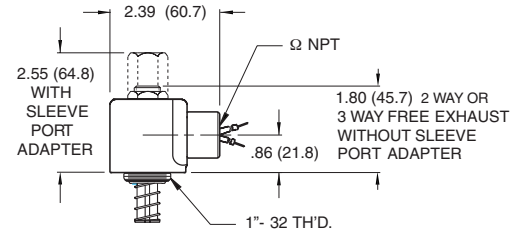


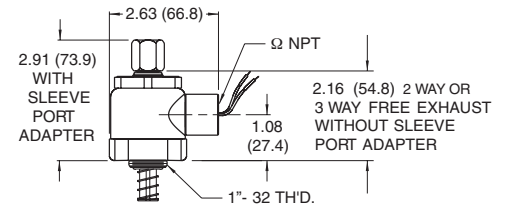
## SERIES O20

For two and three-way OEM applications. Peter Paul offers a complete line of operators to control most media. Available up to 1/4" orifice. Consult factory for technical data and detail prints.



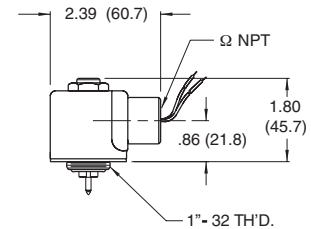
## SERIES OE20 EXPLOSION PROOF SOLENOID OPERATORS

For two and three-way OEM application Peter Paul's unique, unitized design offers the advantages of simplicity of installation (unit is assembled and tested requiring no disassembly) for common voltages and frequencies and carries the U.L. and C.S.A. label. Approved for hazardous locations, Class I — Groups C and D (where atmosphere contains certain specific explosive gases). Class II — Group E (where atmosphere contains metallic dust). F (where atmosphere contains non-metallic combustible dust). And Group G (where atmosphere contains grain dust).



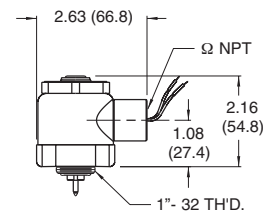
## SERIES OH20

For 2WNC applications where high pressures are used—or where inert seals are required with bubble-tight sealing. Operator and precision press-in seat must be installed to factory specs. Consult factory for technical data and detail prints.



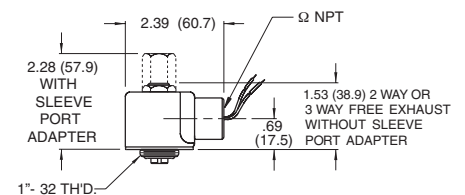
## SERIES OEH20

For 2WNC applications where explosion-proof operators are required with high pressure ratings or inert seal requirement with bubble-tight sealing. Operator and precision press-in seat must be installed to factory specs. Consult factory for technical data and detail prints.



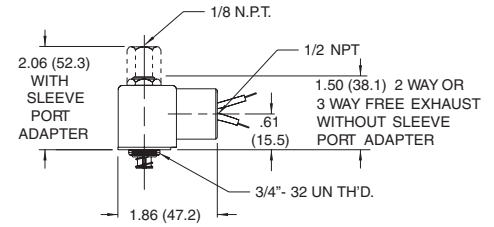
## SERIES O30

For two-way and three-way OEM applications. Peter Paul offers a complete line of operators to control most media. Available up to 3/16" orifice. Consult factory for technical data and detail prints.



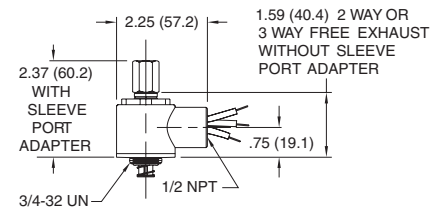
## SERIES O50

For two-way and three-way OEM applications. Peter Paul offers a complete line of miniature operators to control most media. Available up to 1/8" orifice. Consult factory for technical data and detail prints.



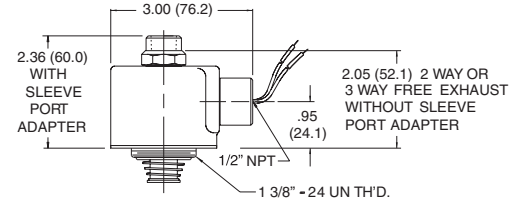
## SERIES OE50

For two and three-way OEM application Peter Paul's unique, unitized design offers the advantages of simplicity of installation (unit is assembled and tested requiring no disassembly) for common voltages and frequencies and carries the U.L. and C.S.A. label. Approved for hazardous locations, Class I — Groups C and D (where atmosphere contains certain specific explosive gases). Class II — Group E (where atmosphere contains metallic dust). F (where atmosphere contains non-metallic combustible dust). And Group G (where atmosphere contains grain dust).



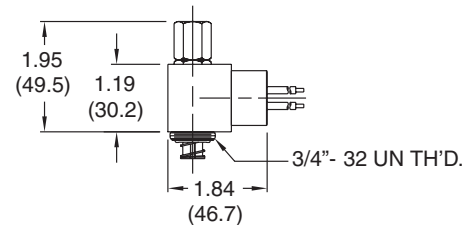
## SERIES O70

For two-way and three-way OEM applications. Peter Paul offers a complete line of large capacity operators to control most media. Available up to 1/4" orifice. Consult factory for technical data and detail prints.



## SERIES O15

For two-way and three-way OEM applications. Peter Paul offers a complete line of miniature operators to control most media. Available up to 3/32" orifices. This line's unique design incorporates the coil and magnetic structure encapsulated completely in molded epoxy. Consult factory for technical data and detail drawing of cavity machining dimensions.



## SERIES OELW

For two-way and three-way OEM applications. Peter Paul offers a complete line of miniature operators to control most media. Available up to 1/8" orifice. Consult factory for technical data and detail prints.

