

**PETER PAUL**

# SERIES 70 HIGH FLOW MODEL 72



TWO-WAY NORMALLY CLOSED VALVES  
LOW PRESSURE & VACUUM APPLICATIONS

**NOW! MORE CAPABILITIES AND CAPACITIES FROM THE 70 SUPER VALVE SERIES.**

THIS "72" PROVIDES **HIGH FLOW** at low pressures

- Vacuum lines • Low pressure gas and low pressure liquids
- Gravity feed lubrication • Quick media fill or dump

### SPECIFICATIONS

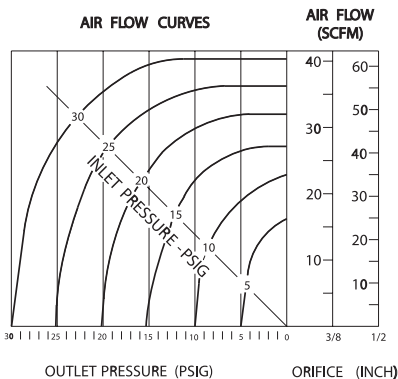
	<b>72T10DCM</b>	<b>72B11DCM</b>
<b>Catalog Number</b> .....	72T10DCM	72B11DCM
<b>Valve Type</b> .....	2WNC	2WNC
<b>Orifice Diameter</b> .....	3/8"	1/2"
<b>Flow Rate</b> .....	see curves	see curves
<b>CV Factor</b> .....	1.92	2.92
<b>Pipe Size</b> .....	3/8 NPT	1/2 NPT
<b>Internal Leakage</b> .....	bubble tight	bubble tight
<b>External Leakage</b> .....	bubble tight	bubble tight
<b>Maximum Operating Pressure Differential</b> .....	25 PSI	15 PSI
<b>Vacuum</b> .....	down to 5 microns	down to 5 microns
<b>Repair Packs</b> .....	K72TDD (A.C. or D.C.)	K72BDD (A.C. or D.C.)

### 72T10DCM & 72B11DCM

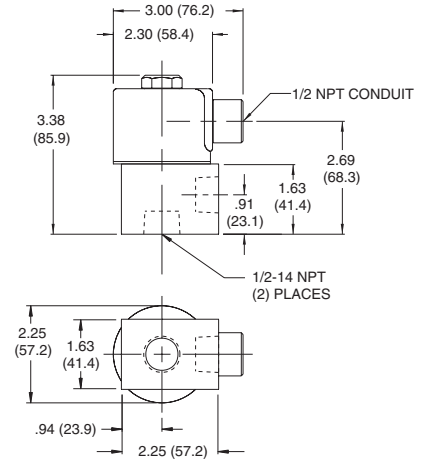
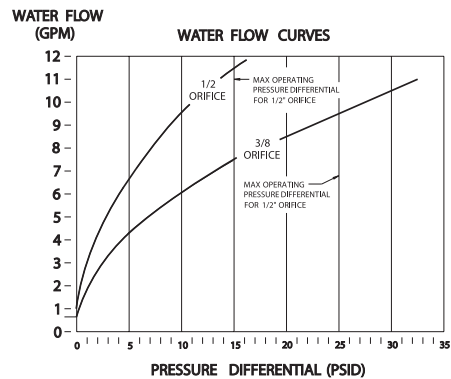
- Voltage** ..... most A.C. & D.C. voltages
- Wattage** ..... 18 watts A.C., 16 watts D.C.
- Response Time**
  - (On Air) ..... 6 to 12 milliseconds to open; 12 to 28 milliseconds to close
- Operating Speed** ..... up to 350 cycles per minute
- Heat Rise** ..... 80°C (176°F) max. in 25°C ambient for continuous duty
- Valve Temperature Range:** STANDARD VALVES – 0°F (-18°C) to 104°F (40°C) ambient; 0°F (-18°C) to 150°F (65°C) media. OPTIONAL VALVES – can tolerate much higher or much lower ambient and media temperatures. Consult factory for specifics.
- Proof Pressure** ..... 5 times maximum operating pressure differential
- Burst Pressure** ..... 500 psi
- Media** ..... air, inert gases and oil
- Filtration** ..... helpful but not required
- Lubrications** ..... helpful but not required
- Ambient Temperature**
  - Range ..... 18°C (0°F) to 40°C (104°F)
- Life Expectancy** ..... millions of cycles on most applications
- Vibrations & Shock** ..... 3 G's and above
- Elastomers** ..... FKM (standard)
- \*Body** ..... Aluminum anodized, corrosion resistant (All other parts stainless steel)

\*Different materials for special applications can be made available.  
i.e. STAINLESS STEEL body for hostile conditions. Consult factory.

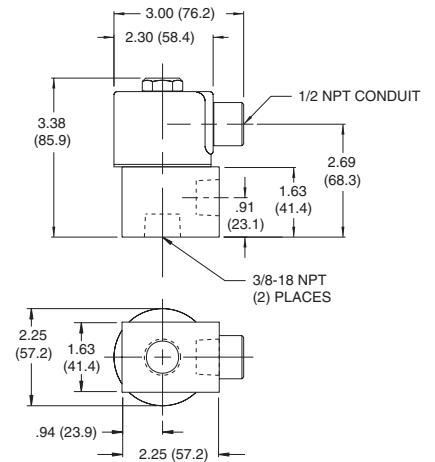
### AIR FLOW CURVES



### WATER FLOW CURVES



SERIES 70 1/2" ORIFICE 2-WAY N.C. VALVE



SERIES 70 3/8" ORIFICE 2-WAY N.C. VALVE