

PETER PAUL

SERIES 40 PLASTIC VALVES (3.3 WATTS AC AND 5 WATTS DC)

APPLICATION:

General purpose valves are engineered for competitive cost and reliable service in humidifiers, pneumatic actuation systems, beverage dispensers and other equipment.

SPECIFICATIONS—

OPERATING CONDITIONS

Media: The valves may be used with air, inert gas and liquid media.

Valve Temperature Range: Standard Valves - 0°F (-18°C) to 104°F (40°C) ambient; 0°F (-18°C) to 150°F (60°C) media. Optional Valves - can tolerate much higher or much lower ambient and media temperatures. Consult factory for specifications.

Maximum Operating Pressure Differentials: See catalog listings

Burst Pressure: 1000 PSI

Leakage: Bubble tight for standard valves

Vacuum: To 5 Microns - Consult factory

ELECTRICAL CHARACTERISTICS

Coil Voltage: 24 to 277 VAC 50-60 HZ.—6 to 120 VDC. All standard voltages (U.S. & Export) carried in stock. Special voltages readily produced on order.

Nominal Power:

<u>D.C. VALVES</u>	<u>A.C. VALVES</u>
5 Watts	3.3 watts

Coil Construction: Standard, Molded with 24" leads.

Typical Response Time on Air: 4-16 Milliseconds

Operating Speed: Up to 600 CPM

Duty Cycle: Continuous or Intermittent

MECHANICAL CHARACTERISTICS

Material: All interior parts are stainless steel and, acetal and PET.

Orifice Diameter: See catalog listings

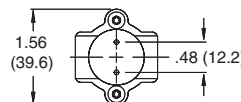
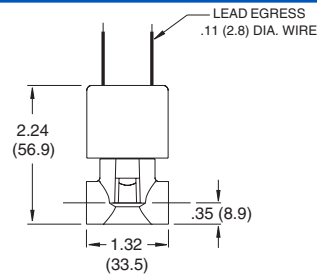
Porting: 1/8 NPT

Life expectancy: Millions of cycles, depending on application, lubrication, etc.

Valve Weight: Only .27 (14 1/2 oz.) lbs average

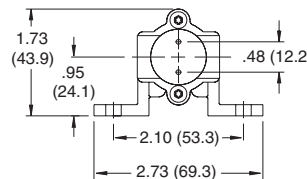
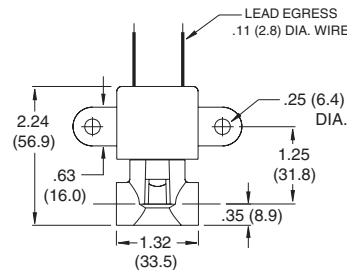
Repair Packs: Consult Factory

FOR FLOW CHARTS SEE PAGES 95-97



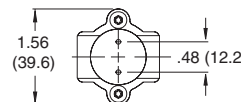
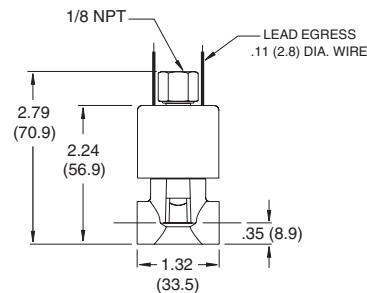
BOTTOM MOUNTING HOLES
.072 (1.83) DIA. X .19 (4.8) DEEP
(#2 PLASTITE SCREWS)

2-Way and 3-Way Normally Closed Exhaust to Atmosphere



BOTTOM MOUNTING HOLES
.072 (1.83) DIA. X .19 (4.8) DEEP
(#2 PLASTITE SCREWS)

With Bracket



BOTTOM MOUNTING HOLES
.072 (1.83) DIA. X .19 (4.8) DEEP
(#2 PLASTITE SCREWS)

3-Way Normally Closed Piped Exhaust



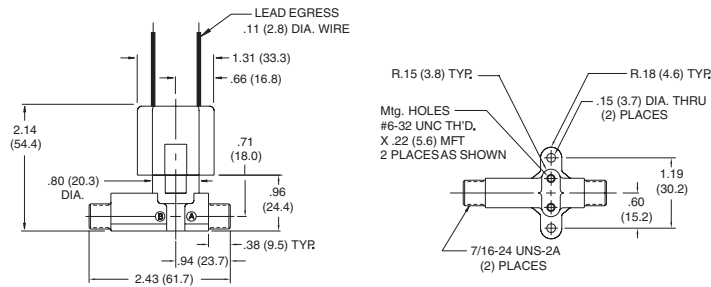
SOLENOID VALVES . . .

MODEL TYPE	FLOW CONFIGURATION	Valve No: Without Bracket	Valve No: With Bracket	Max Operating Pressure Differential		Orifice Size		CV Factor	
				AC	DC	Inlet	Exhaust	Inlet	Exhaust
Model 42 2 Way Normally Closed		42G5DGM**	42G5DBM**	300	300	1/32		0.022	
		42H5DGM**	42H5DBM**	300	150	3/64		0.055	
		42J15DGM	42J15DBM	300	100	1/16		0.090	
		42K15DGM	42K15DBM	250	60	3/32		0.145	
		42N15DGM	42N15DBM	125	30	1/8		0.200	
Model 43 Exhaust To Atmosphere		43JJ15DGM	43JJ15DBM	150	150	1/16	1/16	0.090	0.075
		43KK15DGM	43KK15DBM	60	60	3/32	3/32	0.145	0.145
		43NK15DGM	43NK15DBM	30	30	1/8	3/32	0.200	0.145
Model 43 Piped Exhaust		43JJ15XGM	43JJ15XBM	150	150	1/16	1/16	0.090	0.075
		43KK15XGM	43KK15XBM	60	60	3/32	3/32	0.145	0.145
		43NK15XGM	43NK15XBM	30	30	1/8	3/32	0.200	0.145

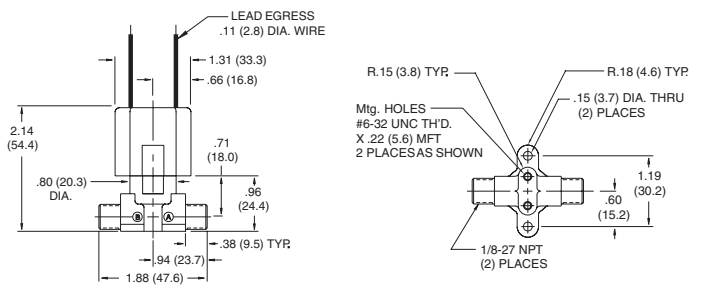
SERIES 40 SOLENOID VALVES OPTIONAL BRASS BODIES*



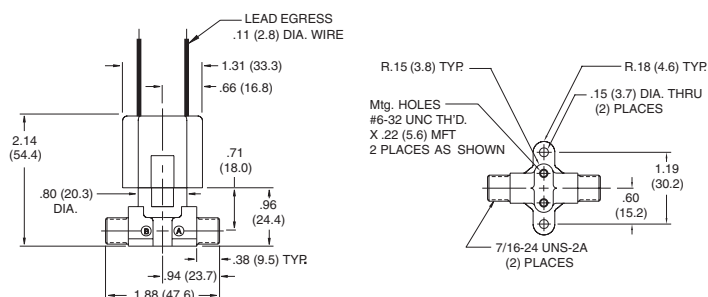
S-40 Forged Brass Body,
1/4 Compression fittings, with Filter
Available with or without bracket.



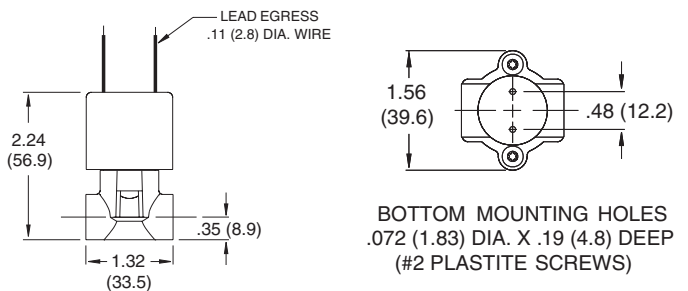
S-40 Forged Brass Body, 1/8 NPT Male Fittings
Plastic Overmold
Available with or without bracket.



S-40 Forged Brass Body, 1/4 Compression fittings,
Plastic Overmold
Available with or without bracket.



S-40 Forged Brass Body, 1/8 NPT Female fittings,
Plastic Overmold
Available with or without bracket.



** These orifice sizes available only with Brass Bodies
* Brass Bodies have a 3/32 Maximum Orifice Size.