

SPECIFICATIONS — 3-WAY EXPLOSION PROOF VALVES

OPERATING CONDITIONS

Media: Air, water, and other fluids, compatible with standard Buna seals.
Hot water, steam, gasoline, and many oils require special seal materials - Consult representative or factory.

Valve Temperature Range: 0°F (-18°C) to a maximum of 221°F (105°C) including coil heat rise, ambient and media temperatures. Other temperature ranges available on request—along with specific application parameter information specified.

Maximum Operating Pressure Differentials: See Catalog Listings

Burst Pressure: 5000 PSI

Leakage: Bubble tight for standard valves

Vacuum: To 5 Microns - Consult factory

ELECTRICAL CHARACTERISTICS

Coil Voltage: 5 to 825 VAC 50-60 HZ - 1.8 to 265V DC

Nominal Power:

Wattage
A.C. 7.3 Watts
D.C. 9.5 Watts

Coil Construction: Molded coil and third wire ground (standard)

Typical Response Time on Air: 4-16 Milliseconds

MECHANICAL CHARACTERISTICS

Body: Stainless steel

Orifice Diameter: See catalog listings

Porting: See catalog listings

Housing: 1/2" NPT conduit

Listings: Valves are U.L. Listed and CSA Certified for Hazardous Locations—Class I, Div 1, Group C and D - Class II, Div 1, Groups E, F, and G; Div 2 Groups A,B,C,D,E,F, AND G.

OPTIONS AVAILABLE — 3-WAY EXPLOSION PROOF

FOR ILLUSTRATED OPTIONS SEE PAGES 76-81
FOR FLOW CHARTS SEE PAGES 95-97

HOUSING OPTIONS – see page 78

MOUNTING BRACKET
All Models

COIL OPTIONS – see page 79

MOLDED COIL
Standard

POTTED COIL & HOUSING
All models

HIGH TEMPERATURE MOLDED COIL
All Models

BODY OPTIONS – see page 80

METERING TO 1/8" ORIFICE
All Models

METERING TO 1/4" ORIFICE
Models E23

METERED BYPASS
Models E23, E25, E26

MANUAL OVERRIDE
All Models*

METERED EXHAUST PORT
Model E23, E25, E26

PORT OPTIONS – see page 81

BOTTOM ORIFICE PORT
All Models

BOTTOM CAVITY PORT
Models E23**, E24, E25, E26

PORT 90° LEFT
All Models

MANIFOLD MOUNT
Models E23**, E24, E25, E26

FLANGE MOUNT
Models E23**, E24, E25, E26

PORT 90° RIGHT
All Models

MISCELLANEOUS

Options – see page 76

SILVER SHADING RING
All Models

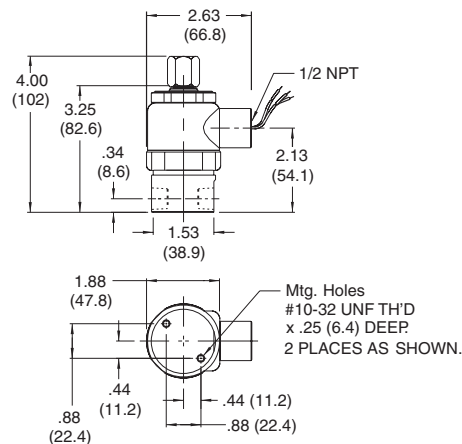
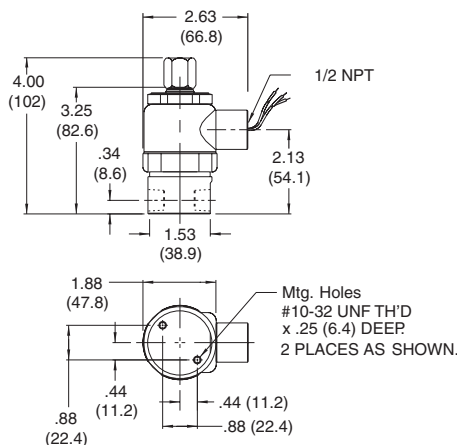
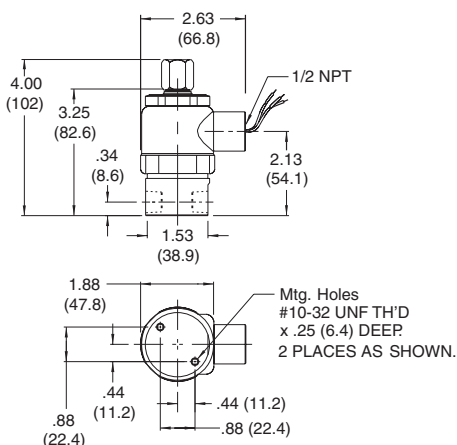
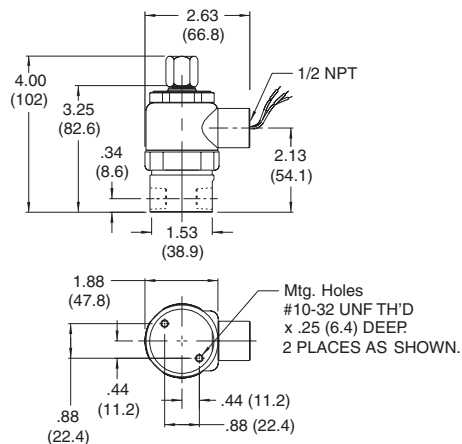
ALUMINUM SHADING RING
All Models

BUILT IN MUFFLER
All Models

Note: Availability of certain options or combination of options may vary with quantity of units ordered – consult representative or factory.

* Not available over 250 psi

** Not available in 1/4" orifice





PETER PAUL

SOLENOID VALVES . . .

SERIES 20 — MODEL E23—3-WAY NORMALLY CLOSED —PIPED EXHAUST

DE-ENERGIZED IN → EXH. ↑ CYL →	† MAX. OPER. PRESS DIFF.		ORIFICE SIZE		CV FACTOR		VALVE NUMBER CONDUIT HOUSING	
	AC	DC	INLET	EXH.	INLET	EXH.	1/8 NPT PORTS	1/4 NPT PORTS
ENERGIZED IN → EXH. ↓ CYL →	400	400	1/32	1/32	.024	.024	E23GG7XCCM	E23GG9ZCCM
	150 (200)	150 (200)	3/64	1/16	.052	.095	E23HJ7XCCM	E23HJ9ZCCM
	100 (135)	100 (135)	1/16	1/16	.095	.095	E23JJ7XCCM	E23JJ9ZCCM
	100 (135)	100 (135)	1/16	3/32	.095	.156	E23JK7XCCM	E23JK9ZCCM
	75 (100)	75 (100)	3/32	3/32	.156	.156	E23KK7XCCM	E23KK9ZCCM ✓
	50 (70)	50 (70)	1/8	3/32	.284	.156	E23NK7XCCM	E23NK9ZCCM
	35 (40)	35 (40)	1/8	1/8	.284	.227	°E23NN7XCCM	E23NN9ZCCM
	20 —	20 —	3/16	3/32	.500	.156	E23PK7XCCM	E23PK9ZCCM
	20 —	20 —	3/16	1/8	.500	.227	°E23PN7XCCM	°E23PN9ZCCM
	15 —	15 —	1/4	3/32	.700	.156	E23RK7XCCM	E23RK9ZCCM
15 —	15 —	1/4	1/8	.700	.227	°E23RN7XCCM	°E23RN9ZCCM	

°VALVES WITH 1/8 SLEEVE ORIFICE ARE NOT UL NOR CSA APPROVED

SERIES 20 — MODEL E24—3-WAY NORMALLY OPEN

DE-ENERGIZED IN → EXH. ↓ CYL →	† MAX. OPER. PRESS DIFF.		ORIFICE SIZE		CV FACTOR		VALVE NUMBER CODUIT HOUSING	
	AC	DC	INLET	EXH.	INLET	EXH.	1/8 NPT PORTS	1/4 NPT PORTS
ENERGIZED IN → EXH. ↑ CYL →	400	400	1/32	1/32	.024	.024	E24GG7XCCM	E24GG9ZCCM
	150 (225)	150 (225)	3/64	1/16	.052	.095	E24HJ7XCCM	E24HJ9ZCCM
	100 (150)	100 (150)	1/16	1/16	.095	.095	E24JJ7XCCM	E24JJ9ZCCM
	100 (125)	100 (125)	1/16	1/8	.095	.284	E24JN7XCCM	E24JN9ZCCM
	75 (90)	75 (90)	3/32	1/8	.156	.284	E24KN7XCCM	E24KN9ZCCM ✓
	30	30	1/8	1/8	.227	.284	°E24NN7XCCM	°E24NN9ZCCM

°VALVES WITH 1/8 SLEEVE ORIFICE ARE NOT UL NOR CSA APPROVED

SERIES 20 — MODEL E25—3-WAY DIRECTIONAL CONTROL

DE-ENERGIZED N.C. → N.O. ↑ IN →	† MAX. OPER. PRESS DIFF.		ORIFICE SIZE		CV FACTOR		VALVE NUMBER CODUIT HOUSING	
	AC	DC	INLET	EXH.	INLET	EXH.	1/8 NPT PORTS	1/4 NPT PORTS
ENERGIZED N.C. → N.O. ↓ IN →	500	500	1/32*	1/32	.024*	.024	E25GG7XCCM	E25GG9ZCCM
	235 (400)	235 (300)	3/64*	3/64	.052*	.052	E25HH7XCCM	E25HH9ZCCM
	200 (225)	200 (200)	1/16*	3/64	.095*	.052	E25JH7XCCM	E25JH9ZCCM
	150 (225)	150 (200)	1/16*	1/16	.095*	.095	E25JJ7XCCM	E25JJ9ZCCM
	100 (150)	100 (125)	3/32*	3/32	.156*	.156	E25KK7XCCM	E25KK9ZCCM
	100 (125)	100 (125)	1/8*	3/32	.284*	.156	E25NK7XCCM	E25NK9ZCCM ✓
	35 (40)	35 (40)	1/8*	1/8	.284*	.227	°E25NN7XCCM	°E25NN9ZCCM

°VALVES WITH 1/8 SLEEVE ORIFICE ARE NOT UL NOR CSA APPROVED

SERIES 20 — MODEL E26—3-WAY MULTI-PURPOSE

DE-ENERGIZED N.C. → N.O. ↑ COM. →	† MAX. OPER. PRESS DIFF.		ORIFICE SIZE		CV FACTOR		VALVE NUMBER CODUIT HOUSING	
	AC	DC	INLET	EXH.	INLET	EXH.	1/8 NPT PORTS	1/4 NPT PORTS
ENERGIZED N.C. → N.O. ↓ COM. →	400	400	1/32*	1/32	.024*	.024	E26GG7XCCM	E26GG9ZCCM
	150	150	3/64*	3/64	.052*	.052	E26HH7XCCM	E26HH9ZCCM
	100	100	1/16*	1/16	.095*	.095	E26JJ7XCCM	E26JJ9ZCCM ✓
	75	75	3/32*	3/32	.156*	.156	E26KK7XCCM	E26KK9ZCCM
	35	35	1/8*	1/8	.284*	.277	°E26NN7XCCM	°E26NN9ZCCM

°VALVES WITH 1/8 SLEEVE ORIFICE ARE NOT UL NOR CSA APPROVED

* Normally Closed Orifice

† Ratings in brackets are optional extended ratings; consult factory

When ordering add voltage and frequency to complete valve number. Example: (E26GG7XCCM-120/60)

NOTE: The above checked (✓) Valves are most popular based on sales and likely to be in Distributor stock.